

San Antonio

Local market summary



We're bringing a better experience to you and your employees by delivering the tools and resources you need and providing local access to providers you trust.

Network solutions

Our network connects members with care that helps them achieve their health goals. Our strategy is caring, connected and convenient to meet the broad needs of our members. It includes both medical and non-medical care to maximize members' health and wellness. We encourage members to use doctors and hospitals recognized for quality and efficiency. With our wide range of connections, members can compare providers. This means they can make more thoughtful choices about their care. As a result, members can better manage their total medical costs and make the most of their health benefits. We have many network solutions to choose from. Your Aetna® representative can help you decide which is the best fit for your company.

Local insights

1,727

Primary care physicians*

8,651

Specialists*

2,995

Behavioral health

46

Hospitals*

19

Institutes of Excellence™/Institutes of Quality®

Top acute care participating hospitals **

- Baptist Medical Centers - Tenet Healthcare
- Methodist Hospitals - HCA
- University Health System
- Christus Health Hospitals
- Texas Vista Medical Center
- Guadalupe Regional Medical Center
- Resolute Health Hospital

*Enterprise Provider Data Base (EPDB). Information as of December 2021.

**Based on the total number of beds at a hospital as defined in the hospital's Center for Medicare & Medicaid Services (CMS) cost report.



CVS® HealthHUB™ locations

We're breaking the cycle of rising costs. Health care is now more connected and convenient, affordable and accessible, simple and seamless.

CVS Health® plans to have 967 total CVS HealthHUB locations operating by the end of 2022.

MinuteClinic®

Care that's convenient and reliable. MinuteClinic is a walk-in clinic inside select CVS Pharmacy® and Target stores.

114

locations in Texas

CVS Pharmacy®

We're reinventing pharmacy to provide an accessible, supportive and personalized health care experience.

862

retail pharmacy locations in Texas

COVID-19 testing and vaccinations

Our CVS Pharmacy and MinuteClinic locations are uniquely positioned. They bring safe and effective testing options closer to home and help increase access to testing options for even more individuals. We've established more than 4,800 test sites in 45 states and the District of Columbia. Nearly 1,000 of which provide rapid-result testing.

COVID-19 vaccine appointments are available at select CVS Pharmacy locations.

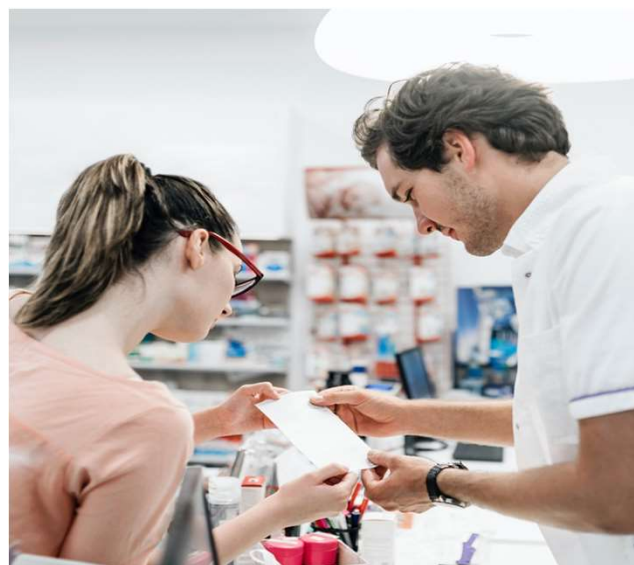
An integrated Medical & Pharmacy offering is the key to success

Integrated medical and pharmacy benefits share information real time. This means we can quickly identify patients who need support, especially those managing multiple chronic conditions.

Teladoc®*

Teladoc is a low cost, convenient and quality alternative for non-emergency medical care.

Care is available 24/7 by web, phone and the Teladoc mobile app.



*Teladoc® is not available to all members. Teladoc and Teladoc physicians are independent contractors and are not agents of Aetna. Visit [Teladoc.com/Aetna](https://www.teladoc.com/Aetna) for a complete description of the limitations of Teladoc services. Teladoc, Teladoc Health and the Teladoc Health are registered trademarks of Teladoc Health, Inc.

Aetna is the brand name used for products and services provided by one or more of the Aetna group of companies, including Aetna Life Insurance Company and its affiliates (Aetna). Aetna, CVS Pharmacy® and MinuteClinic®, LLC (which either operates or provides certain management support services to MinuteClinic-branded walk-in clinics) are part of the CVS Health family of companies. This material is for information only. Health benefits and health insurance plans contain exclusions and limitations. Providers are independent contractors and are not agents of Aetna. Provider participation may change without notice. Aetna does not provide care or guarantee access to health services. Not all health services are covered. Information is believed to be accurate as of the production date; however, it is subject to change. Refer to **Aetna.com** for more information about Aetna® plans.

